

i-CARE

VESTFROST
SOLUTIONS

ANTI BACTERIAL



CARE



Complexity
made simple

CARE



Efficient
performance with
Adaptive Cooling
Technology



CARE

Info
center





Complexity made simple

The first time you start your Vestfrost biomedical product, the screen will take you through an installation setup allowing you to choose a "Cooling profile" which is a way to quickly adjust settings to different modes like "Energy saving" "Chilled medicine" "Room temperature medicine". The setup also allows for language selection, naming of the appliance and more.



Intuitive to operate

Have you ever experienced that you or others, have changed the settings, and are no longer sure how the product will operate? No worries! We have introduced a factory reset button, so you can quickly get the product running at default settings. This can be very handy when they are being repurposed in a different location, or to store different content.

Easier to service

We reckon the importance of effective service and maintenance to always have running systems.

The new controller features a fault-finding mode, where technical staff or your supplier can switch on/off different components, to identify the issue with the product – a much easier process than having to dismantle the unit.

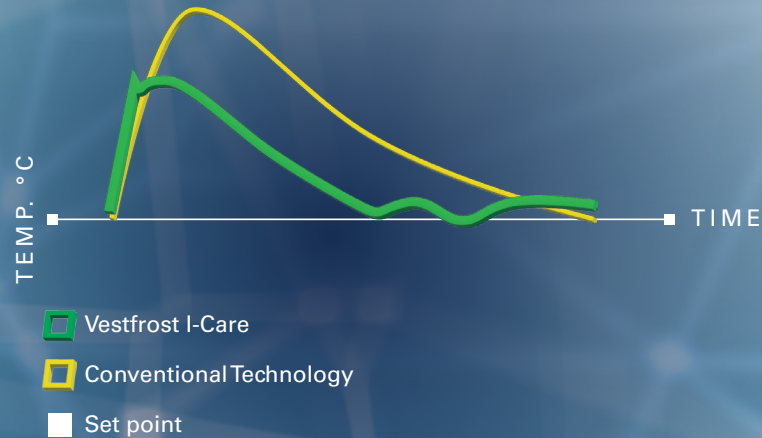
Further, the engine room has been redesigned from the ground up, to make it easier to service the different electrical components. The new LCD display has also been made easy to exchange, in case of accidental damage.



Efficient performance with Adaptive Cooling Technology™

Most brands produce their cooling devices with a conventional compressor, which either runs at 100% or 0%. Not an efficient solution. At Vestfrost we have introduced Adaptive Cooling Technology™, which has significant advantage on several key areas.

[Pull down illustration]



Fast recovery to desired temperature

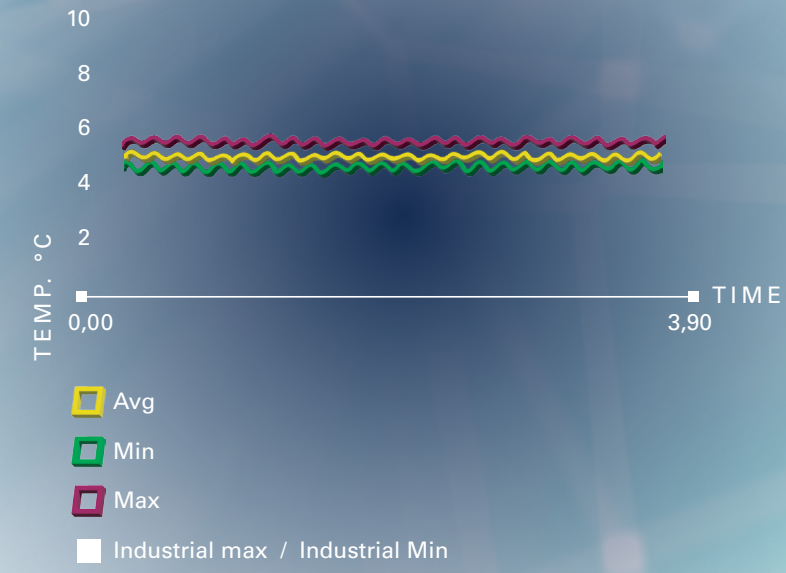
Sometimes you open the door briefly, other times you need to restock the entire cabinets. The longer the cabinet is open, the warmer it gets. Your Vestfrost cooling device will adapt to the situation and apply the needed cooling. This is a much more efficient way to cool a cabinet, and results in a faster recovery to the desired temperature.



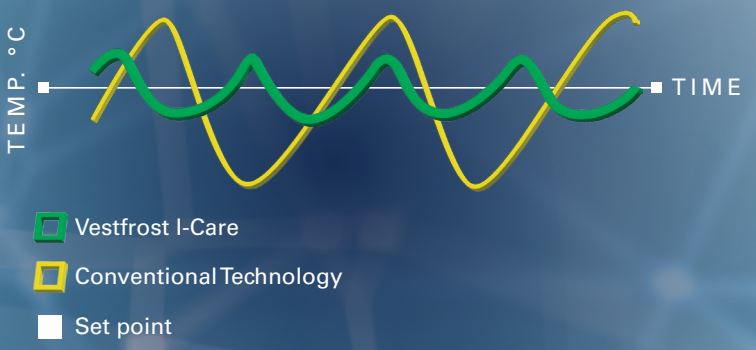
Best in class temperature stability

Temperature inside a refrigerator & freezer is like peaks and valleys. When the compressor is idle, the temperature slowly rises inside the cabinet, as the room temperature outside is higher. With a conventional compressor these peaks and valleys are much further apart. This is because it operates at 100% when it is cooling, so it only turns on when there is a significant need for cooling.

With our Adaptive Cooling Technology™ solution, the compressor can react much quicker and with exactly the cooling that is needed to secure a stable temperature inside the cabinet.



[Stability illustration]



Safe storage, excellent uniformity

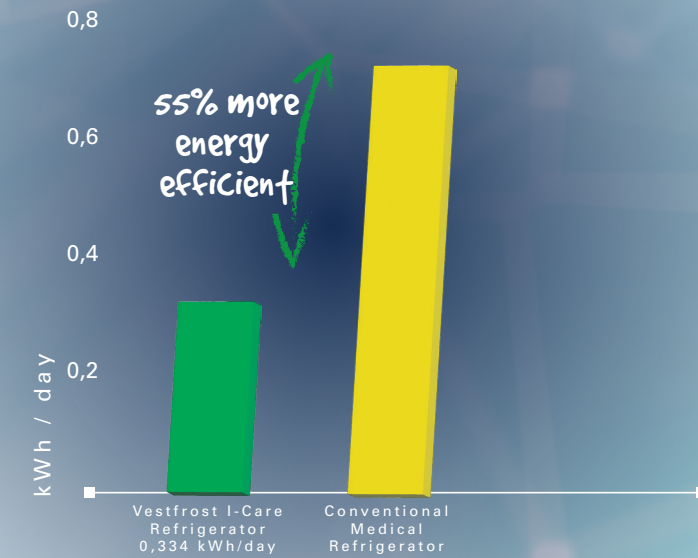
Your biomedical refrigerator & freezer does not have the same temperature at each point inside the cabinet. Hot air is denser than cold, so you will see a difference in temperature between the highest shelf, and the lowest. The way to minimize this, is by adding ventilators and securing a good airflow in the cabinet. This evenly distributes the air and minimizes the difference between the hottest point and the coldest – also referred to as temperature uniformity.

Less noise. Comfortable work environment.

An engine makes the most noise when it is operating at full power. This is no different for the compressors that makes your cooling devices run. That's why our Adaptive cooling technology has another advantage. By adapting to the needed cooling, it doesn't have to operate at 100% often, this means that the noise emittance is dramatically reduced – a much welcomed feature for your staff, customer or patients.



[Low energy illustration]

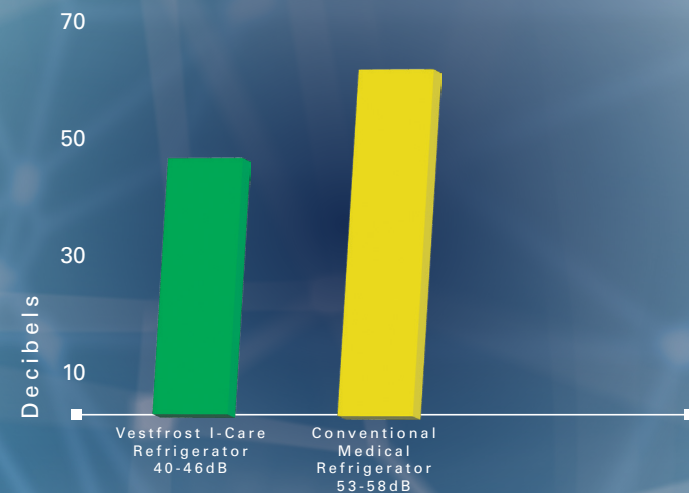


Lower energy consumption

As our cooling is adaptive, the compressor rarely needs to operate at 100%. This is a much more sustainable way to cool, as you will see the energy consumption being much less than conventional refrigerators and freezers. With the new i-CARE series we have also introduced a "energy saving mode" which is another way for you to reduce your environmental footprint.

Choosing a reliable product from Vestfrost will save you money on operation costs as well as being the conscious choice that supports the global efforts of a more sustainable future.

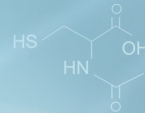
[Low noise illustration]





Info center

Information and documentation are key when storing sensible biomedical content, be it medicine, DNA, RNA or other biological samples. We are aware of this need and have developed a controller which gives you easy access to a multitude of data like live graphs, temperature readings from different spots inside the cabinet, event list and much more - By monitoring and making the data readily available to you, we make sure that you always have the information you need about your inventory.



Live graph

The i-CARE controller features a live graph allowing you to see current and historical temperature of the main probe, condenser, evaporator & reference bottle. This can be useful if you want a quick overview of the past few days, without having to extract the data first.

Event list

With the newly added Event list you will have a quick overview of the latest events. These can be alarms, failures, door status, user actions, defrosting & maintenance. An efficient way to quickly check any events to the cabinet.

The event list is another step to have information readily available for you as a user.

Datalogging

All our appliances are equipped with datalogging capabilities as standard. It is a plug & play system which will start logging temperature, alarms & events, from the moment you switch on the appliance. This saves you time and money, from having to buy a costly stand-alone system.

When needed the data can be extracted via USB, where you can choose to download a full report or a summary of a period that you specify – it has never been easier to document how your content has been stored.

The logo for i-CARE, featuring a stylized lowercase 'i' followed by 'CARE' in a bold, sans-serif font, with a blue swoosh underneath.

Scan and see more about our i-CARE controller





VESTFROST
SOLUTIONS 